

celebrate  
your  
passions



# Breaking New Ground



Presenting Filinvest Land, Inc.'s  
first township development in Tagaytay City.





# Quest Hotel

TAGAYTAY

- **Type of Development:**

164 condominium units to be managed by Chroma Hospitality, Inc. under the Quest Hotel brand

- **Product Offering:**

23 to 54-sqm condominium units with standard room furniture package & joining fee

- **Product Features/Amenities:**

Front desk & housekeeping services, landscaped gardens, infinity pool, and access to function and meeting rooms at the mall

**Quest Hotel**

TAGAYTAY

# A New Tagaytay Blooms



Artist's rendered image

# A New Tagaytay Blooms



Located at the heart of Tagaytay City,  
FORA is envisioned to be  
the **“Largest Integrated Themed Destination”**  
in Tagaytay City



## FORA Components

- The Commercial Block
- The Forest
- The Residential Block

# A New Tagaytay Blooms

FORA Rotunda  
Tagaytay Buildings 1  
& 2

Tagaytay Diversion Road

FORA Rotunda  
Tagaytay Buildings 3  
& 4

“The Forest” – Shared  
Open Space

FORA Rotunda  
Tagaytay Mall

Tagaytay  
Medical  
Center

Tagaytay  
Rotunda

Future Commercial Development

Your second home **COMMUNITY...**



# THE RESIDENTIAL BLOCK

relish your  
great  
escape



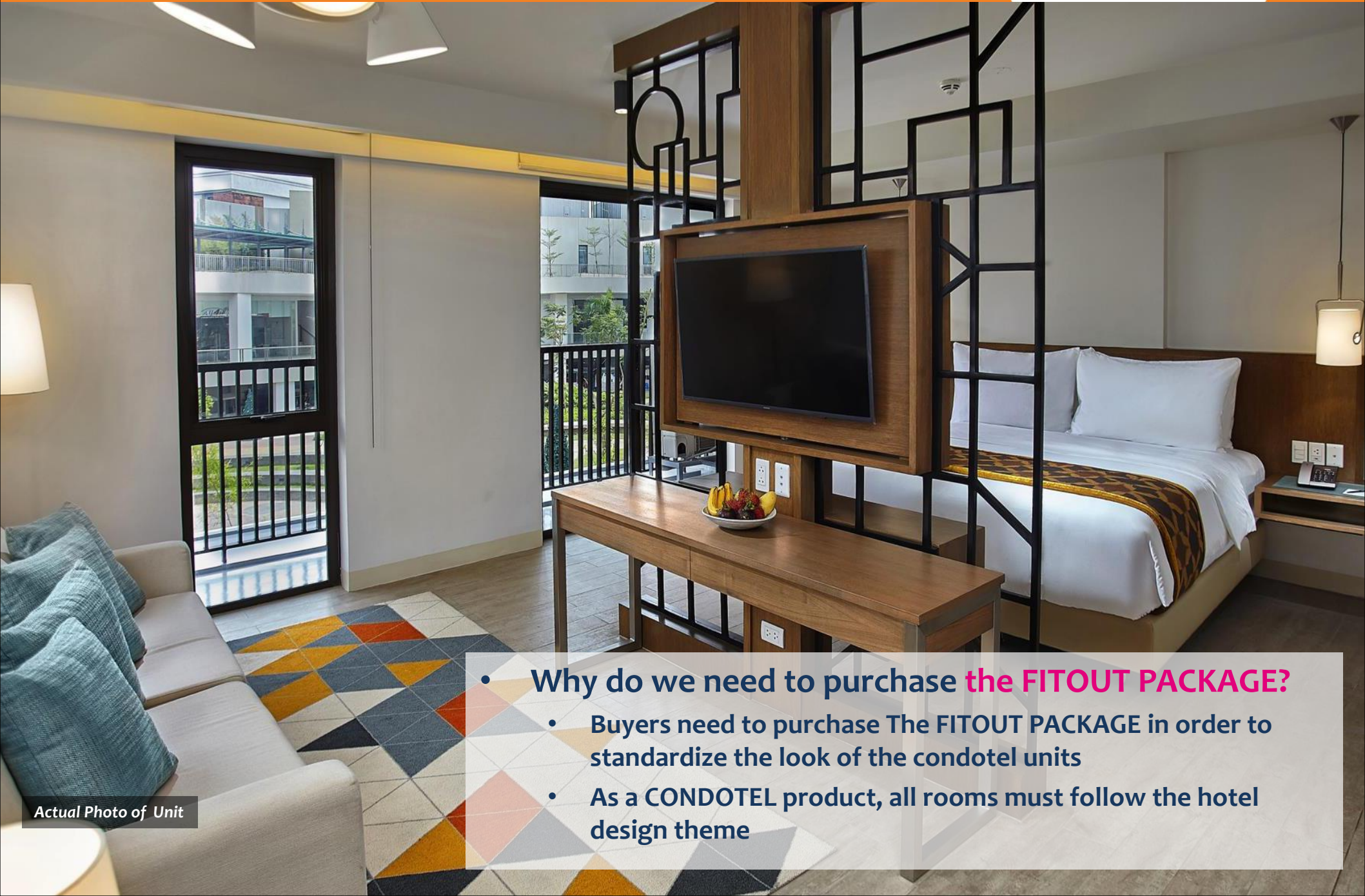


# What is The Fitout Package?

- The **FITOUT Package** includes the standard room furniture of all condotel units
- **Standard Unit Furniture includes the following:**
  - Bed frame & mattress
  - TV console, working table and chair
  - Curtains
  - Shower enclosure
  - Lavatory countertop
  - Air-conditioning units
  - TV, heater, mini refrigerator
  - Safety deposit box
  - Lamp/s and lighting fixtures
  - Phone
  - 100% backup generator set



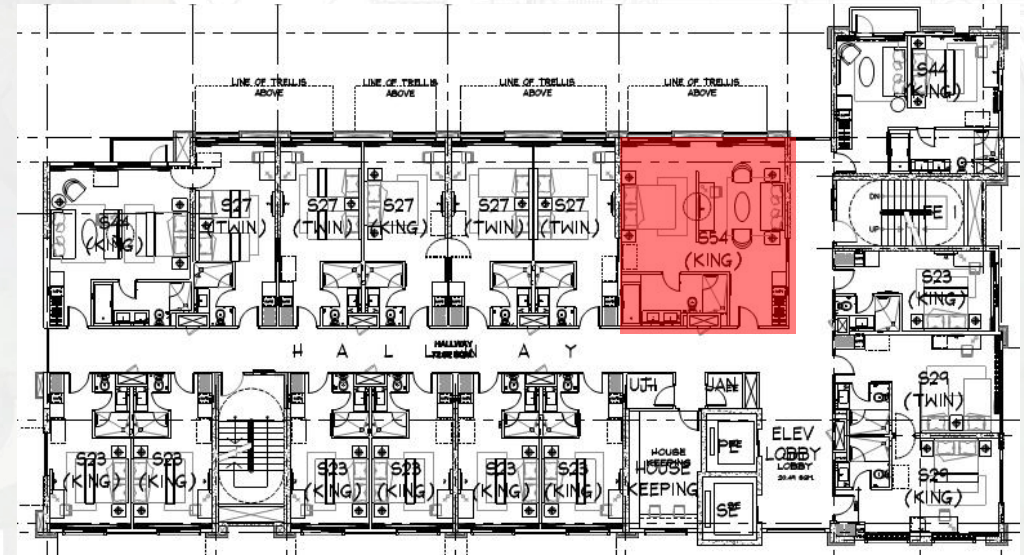
# What is The Fitout Package?



Actual Photo of Unit

- Why do we need to purchase **the FITOUT PACKAGE?**
  - Buyers need to purchase The FITOUT PACKAGE in order to standardize the look of the condotel units
  - As a CONDOTEL product, all rooms must follow the hotel design theme

# Typical Room Layout



1 BR 54  
Unit

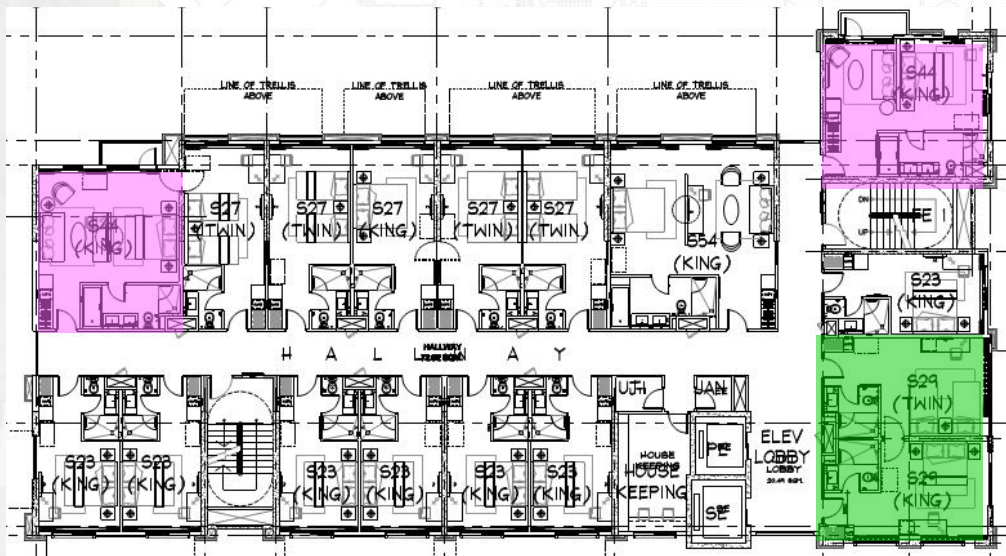


# Typical Room Layout

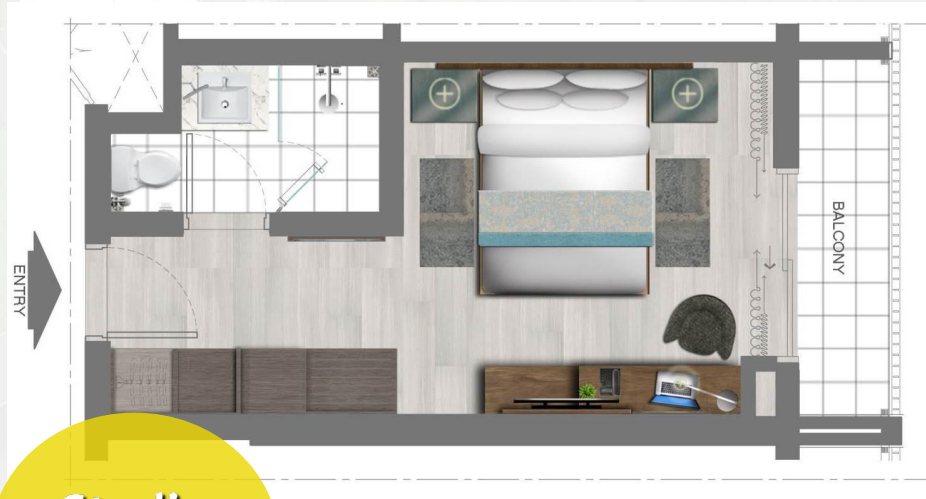
Studio  
29 Unit



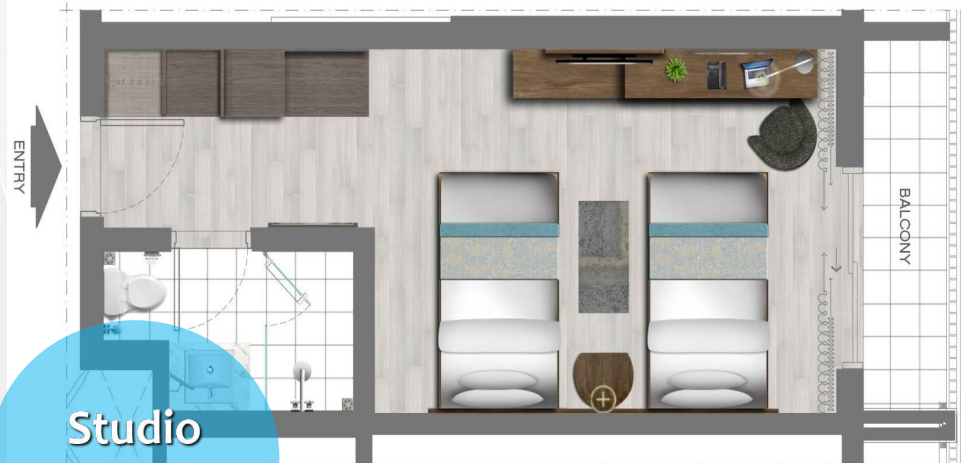
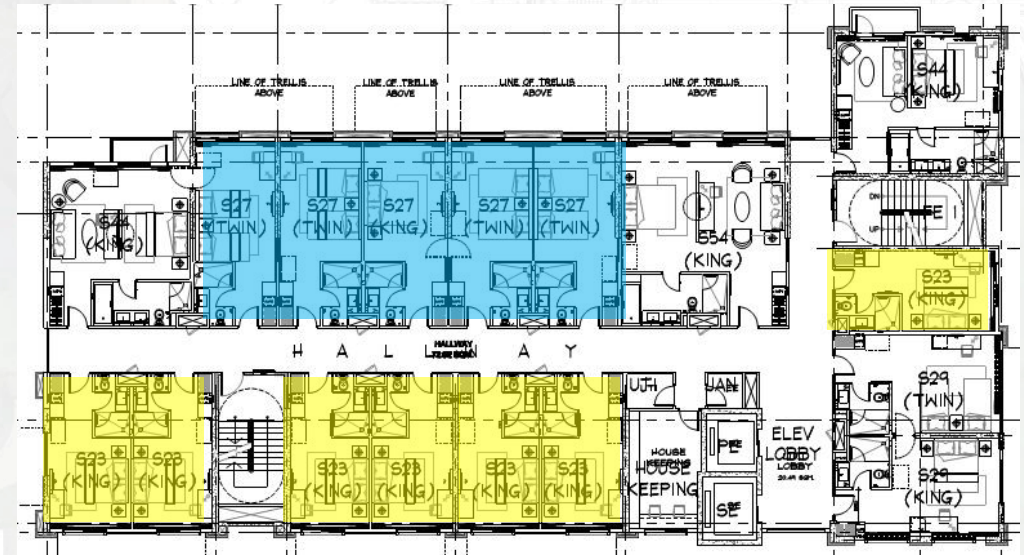
Suite  
44 Unit



# Typical Room Layout



Studio  
23 Unit



Studio  
27 Unit





***Actual photos of Quest Hotel Tagaytay  
Lobby, Café Q and swimming pool***



# What is The Joining Fee?

- **The JOINING FEE** will be used by the operator to purchase the Initial Operating supplies and IT Networks of the Condotel. It also includes pre-opening expenses such as payroll and Sales & Marketing expenses prior to the opening of the hotel
- **Initial Supplies**
  - Linen, towels
  - Waste bins
  - Vanity containers
  - Glassware
  - Cleaning materials
  - Trolleys and cleaning equipment
- **Operating Systems**
  - IT Management Systems
  - Networks
  - PABX
  - Service carts

# Why Invest in FORA?



- **Hassle-free second home product that pays for itself even when you are not using it.**
  - Standard Condo maintenance expenses paid from share of the rental income
- **Professionally managed by Chroma Hospitality, Inc., an experienced hotel management group.**
  - Operates & manages Crimson and Quest Hotel Chains
- **14 free leisure vacation nights annually.**
  - Subject to room availability





more to  
**celebrate**

Find Your  
Passion

Celebrate  
**Life**

foratagaytayph  


fora tagaytayph  


more to  
**discover**

[www.fora.com.ph](http://www.fora.com.ph)

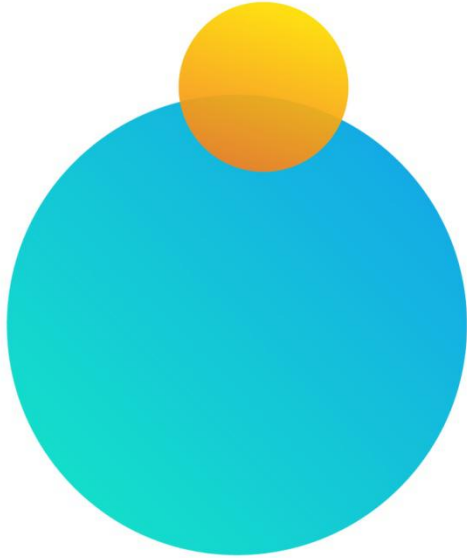
foratagaytayph  


more  
**greens to  
breathe**

Celebrate  
Weekends

Celebrate  
**Family  
Getaways**

fora tagaytayph  
f



foratagaytayph  
Instagram icon

foratagaytayph  
Twitter icon

www.fora.com.ph

